

How to connect SmartLogger1000&2000 to FusionSolar AU



Huawei Technologies Co. Ltd.

Version	Created by	Date	Remarks
02	Huawei e84081311	26.04.2019	FusionSolar

The information in this document may contain predictive statements including, without limitation, statements regarding the future financial and operating results, future product portfolio, new technology, etc. There are a number of factors that could cause actual results and developments to differ materially from those expressed or implied in the predictive statements. Therefore, such information is provided for reference purpose only and constitutes neither an offer nor an acceptance. Huawei may change the information at any time without notice.

This document describe how to set the Ethernet parameters and Management system IP/Domain server for Smartlogger1000&2000 in order to connect on FusionSolar monitoring portal.

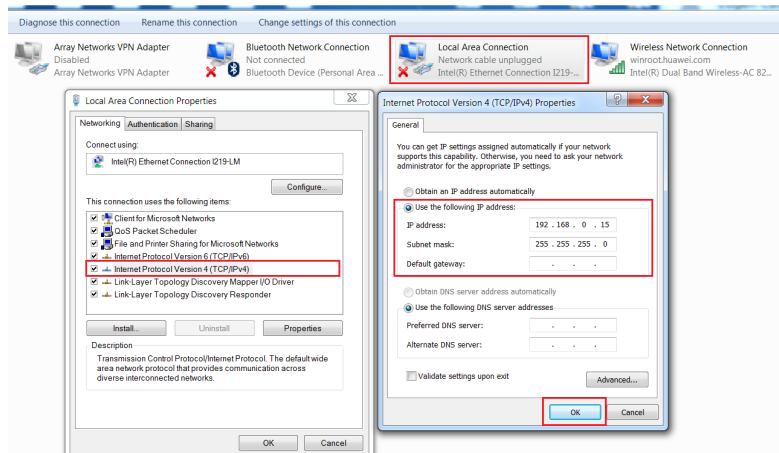
Use the next Domain name to connect the Smartlogger1000@2000:

intl.fusionsolar.huawei.com. If you want to set the Smartlogger1000 on the LCD screen use the next IP: **13.251.20.171**

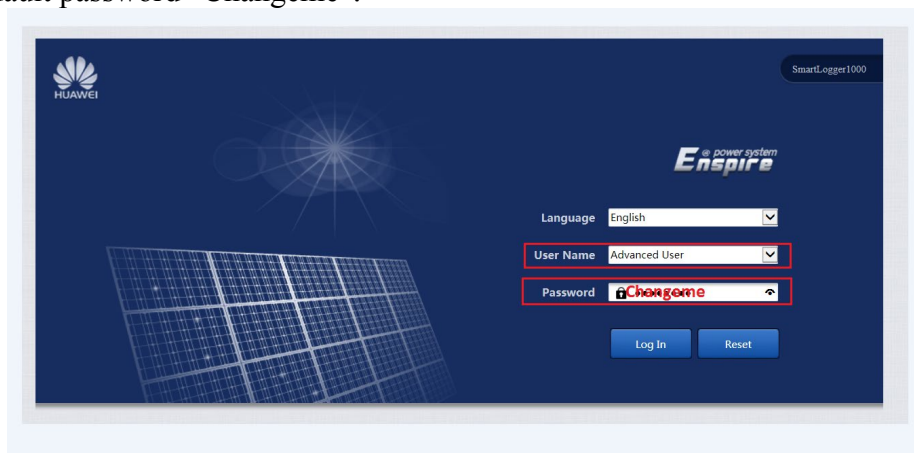
1. FusionSolar settings through WebUi for Smartlogger1000&2000

Before connect on WebUi of Smartlogger1000&2000 you need to set your local area connection of your computer with an IP in the same range like Smartlogger1000&2000 (default IP 192.168.0.10):

Go to Windows start→Control Panel→Network and Internet→Network and Sharing Center→Change adapter settings→Double click on Local Area Connection→Double click on Internet Protocol Version 4 and set the IP 192.168.0.15 like below:

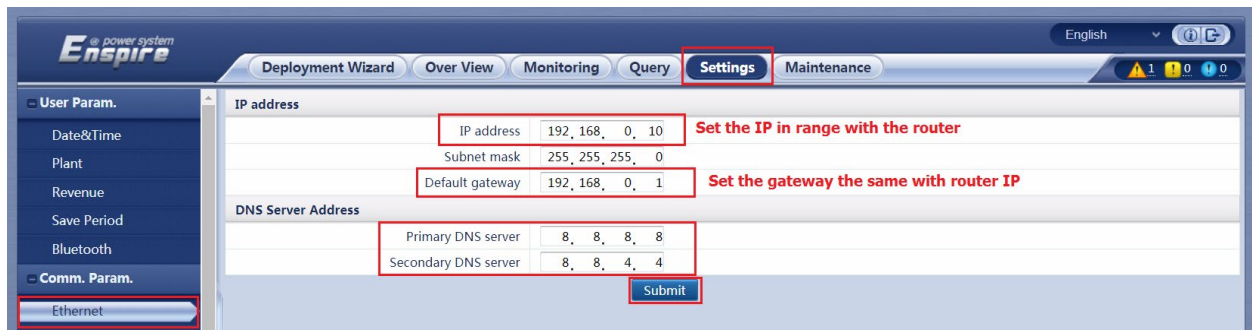


Open the next link in a browser (Chrome or IE) <https://192.168.0.10> and login as advanced user with the default password “Changeme”.



1.1 Set the Ethernet parameters

After you login on Smartlogger1000&2000 select Settings menu → Ethernet → and set the IP in the same range with your router and the Default gateway need to be the same with the router IP and submit.



The default IP for Smartlogger1000&2000 is 192.168.0.10 and if your local IP of your router is 192.168.0.1 you can leave the default Ethernet parameters like it is and the Smartlogger1000&2000 will be able to connect with the router. You can find the router IP on the label, in general the default IP of the routers is 192.168.0.1 and sometime 192.168.1.1.

If your router IP is different set the Smartlogger1000&2000 like below example:

Router IP: 192.168.1.1

Smartlogger1000&2000 IP Address:

IP address: 192.168.1.10

Subnet mask: 255.255.255.0

Default gateway: 192.168.1.1(it is same with router IP)

DNS Server address:

Primary DNS: **8.8.8.8**

Secondary DNS: **8.8.4.4**

1.2 Set the FusionSolar server

From the settings menu select Management System (Neteco) and set like below:

-Server: intl.fusionsolar.huawei.com

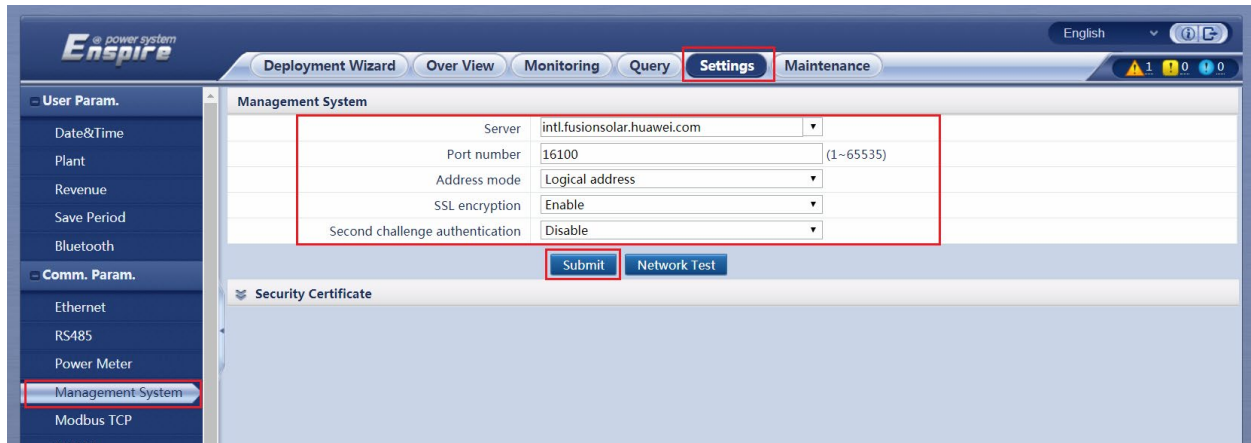
-Port: 16100

-Address mode: Logical address

-SSL encryption: Enable

-Second challenge authentication: Disable

-Submit



You can perform a network test if the option is available.
 After you set the Ethernet parameter and FusionSolar server you can create installer account connecting to the next link: <https://intl.fusionsolar.huawei.com>.
 Contact the service team at eu_inverter_support@huawei.com for instruction.

2. FusionSolar settings through LCD screen of Smartlogger1000

2.1 Set the Ethernet parameter


Before you set the Neteco IP server on the Smartlogger1000 you need to set the connection with a router and set the Ethernet parameters in order to connect Smartlogger1000 to internet:

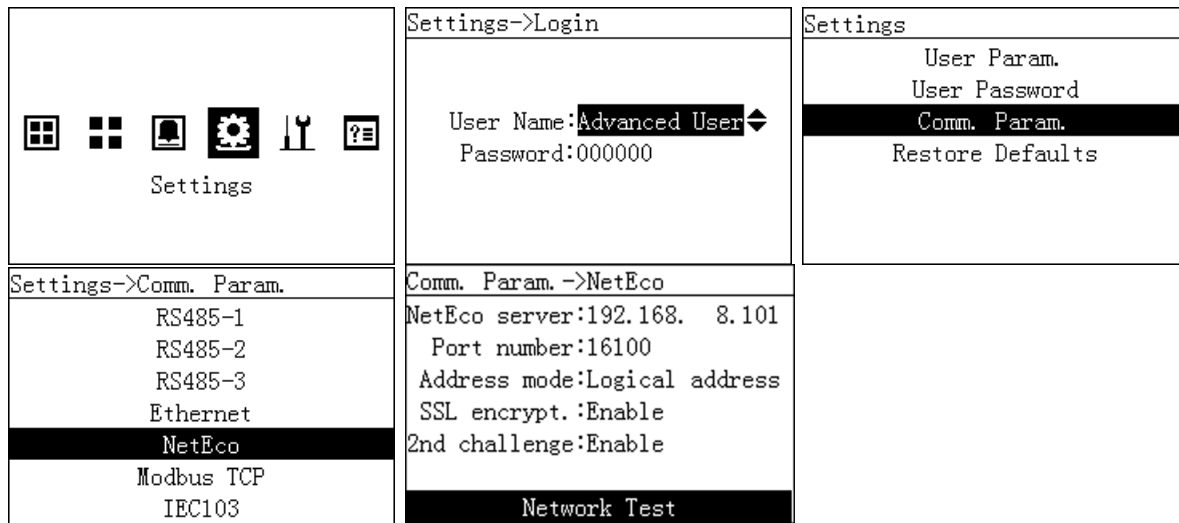
Press enter and with the arrow choose Settings→Login as Advanced user→Com. Parameters→Ethernet and set the IP for Smartlogger1000 in the same range with your router. The default password is “000001”.

<p>Settings</p>	<pre>Settings->Login User Name:Advanced User Password:000000</pre>	<pre>Settings User Param. User Password Comm. Param. Restore Defaults</pre>
<pre>Settings->Comm. Param. RS485-1 RS485-2 RS485-3 Ethernet NetEco Modbus TCP IEC103</pre>	<pre>Comm. Param. ->Ethernet Auto obtain IP:Disable IP address:192.168. 0. 10 Subnet mask:255.255.255. 0 Gateway:192.168. 0. 1 DNS-1:192.168. 0. 1 DNS-2: 0. 0. 0. 0 Submit</pre>	<p>DNS Server address: DNS-1: 8.8.8.8 DNS-2: 8.8.4.4</p>

2.2 Set FusionSolar IP server

After you set the Ethernet parameters set the Neteco IP server like below:

Press enter  and with the arrow choose Settings→Login as Advanced user→Com. Parameters→Management System (Neteco) and set the Neteco IP **13.251.20.171** and the port **16100**.



If you have the option Network test you can made a test to see if your Smartlogger1000 is connected to the server.

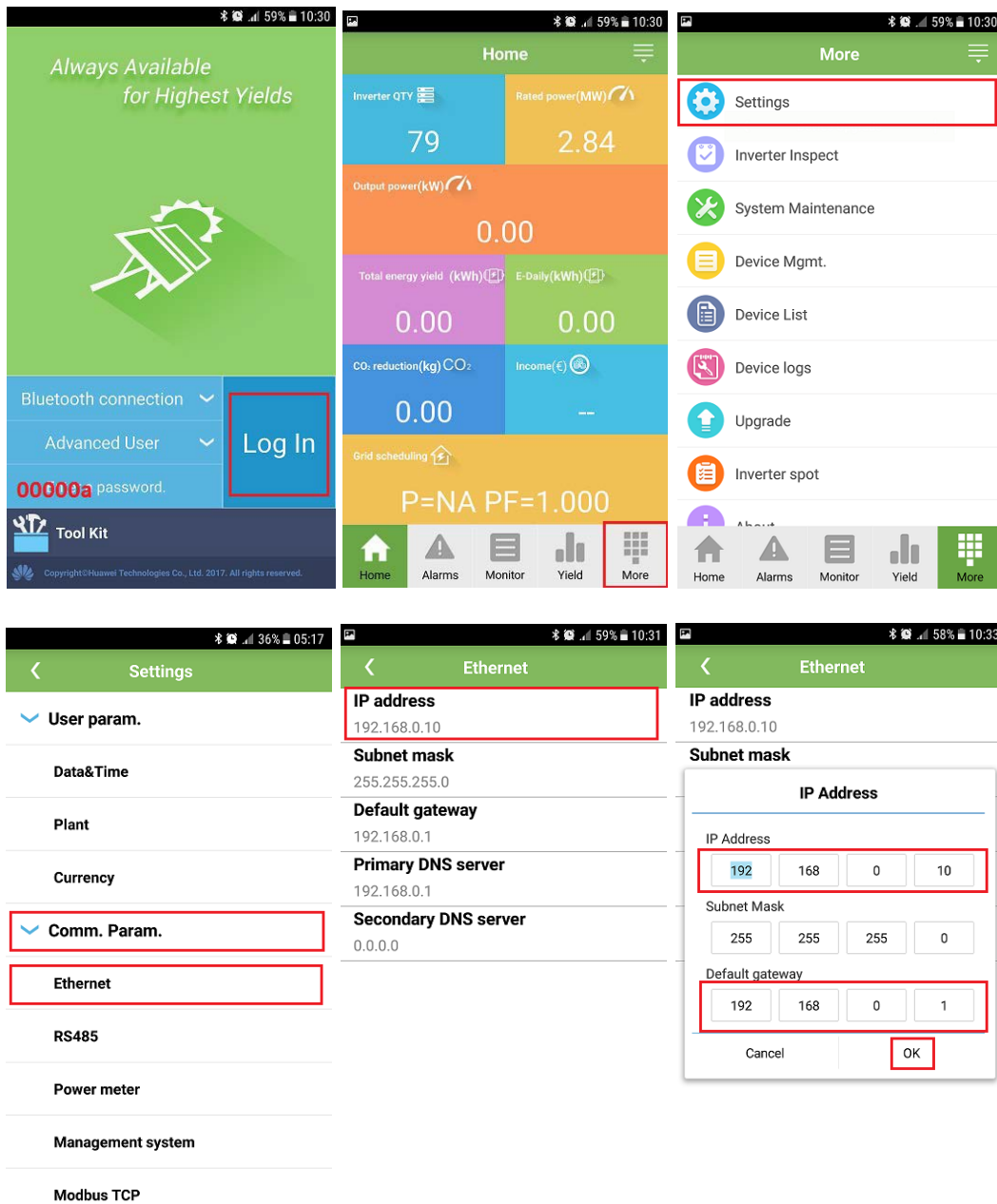
3. FusionSolar settings through SUN2000APP for Smartlogger2000

Search for SUN2000APP in one of the following app stores, download the installation package, and install the SUN2000APP by following the instructions.

- Huawei App Store (Android)
- Google Play (Android)
- App Store (iOS)

3.1 Set the Ethernet parameters

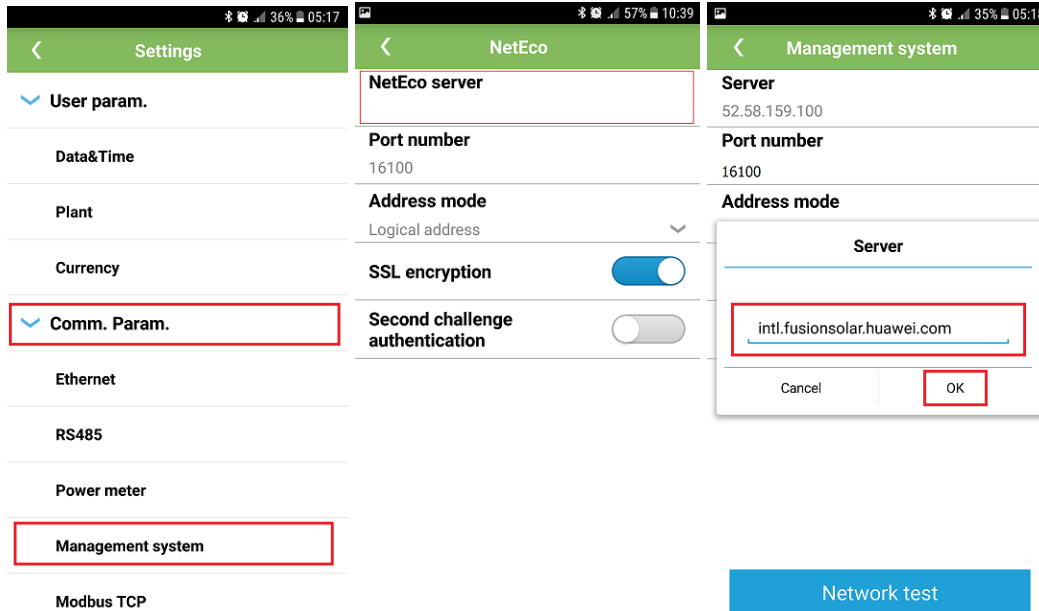
Enable the Bluetooth on your phone and connect on SUN2000APP as Advanced user (default password is "00000a") →choose from main menu More→Settings→Comm. Param. →Ethernet→set the IP in range with the router IP and Default gateway the same with router IP.



DNS Server address:
 Primary DNS: 8.8.8.8
 Secondary DNS: 8.8.4.4

3.2 Set the FusionSolar IP server

From the “Settings” menu, “Comm.Param” select Management system and set the FusionSolar server intl.fusionsolar.huawei.com. The default port number is 16100.



Perform a network test to see if the settings are correct.

After setting the connection with FusionSolar monitoring portal you can start to create an installer account and the plant using the next link: <https://intl.fusionsolar.huawei.com>. You can contact service team to send you instruction at the next contacts:

Huawei Enterprise Technical Assistant Center will assist you 24x7

E-mail: eu_inverter_support@huawei.com

24*7 Hotline:

Europe +80 03 38 88 888 (except below countries)

Croatia/Latvia/Bulgaria +80 07 77 78 899

Iceland 800201866 Slovakia +40 31 22 61 915 Moldova 080061466

Serbia 800190899 Lithuania 880031499 Romania 0800400897

Australia 1800046639 Canada +40 31 22 61 915 New Zealand 080061466

America 1 877 9huawei